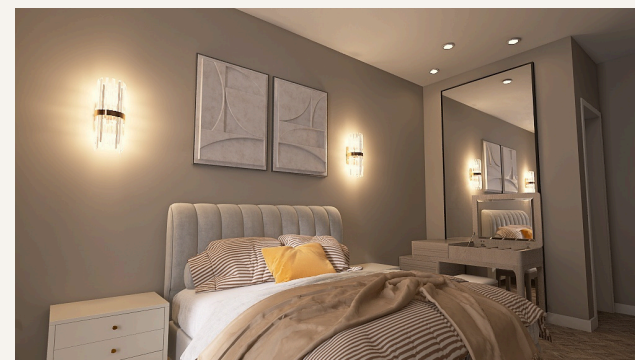
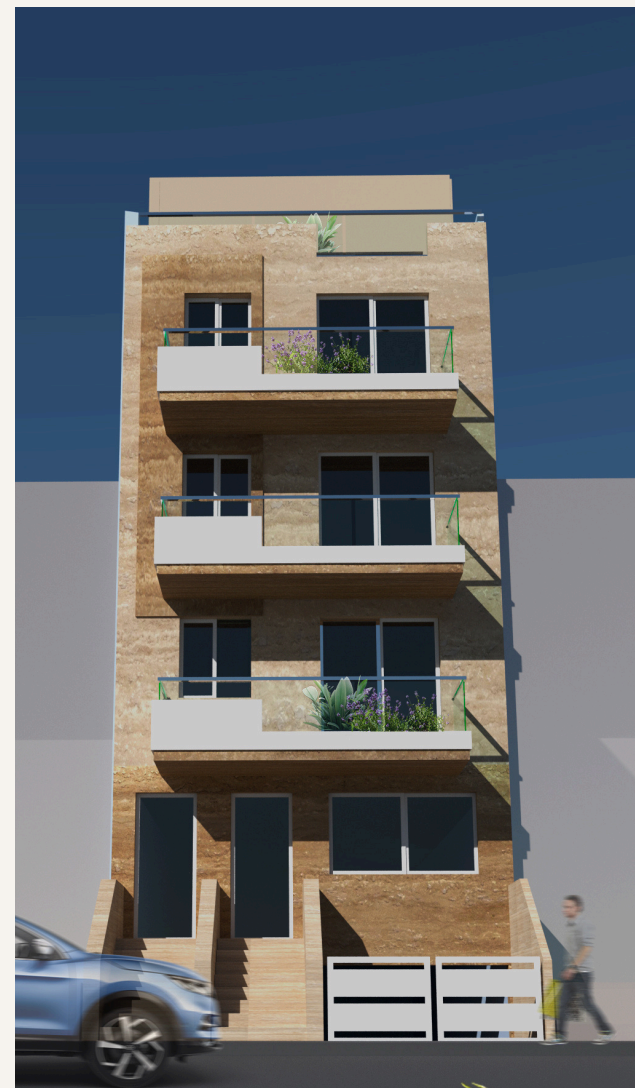


GR

The Godsons Residence

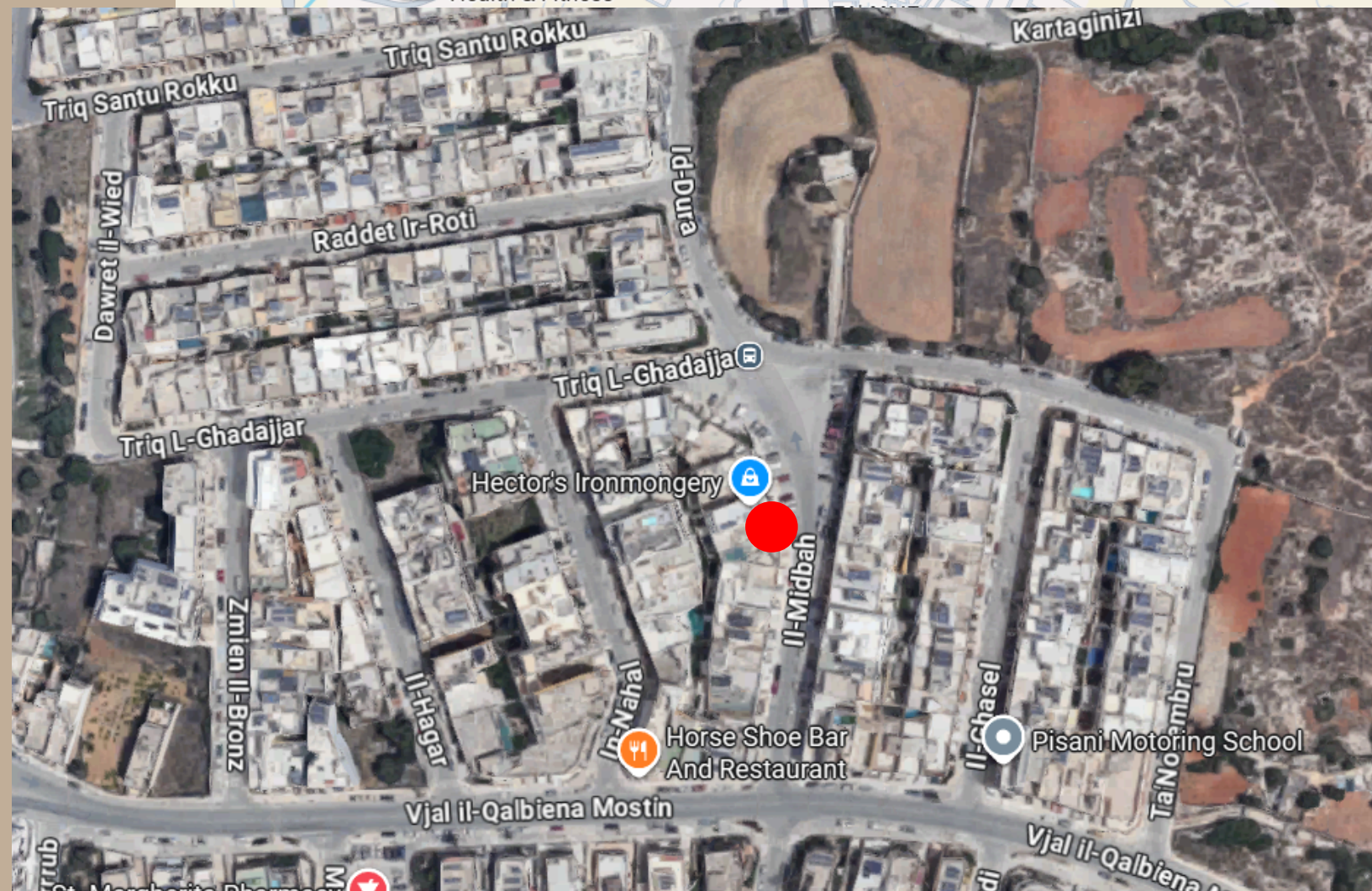
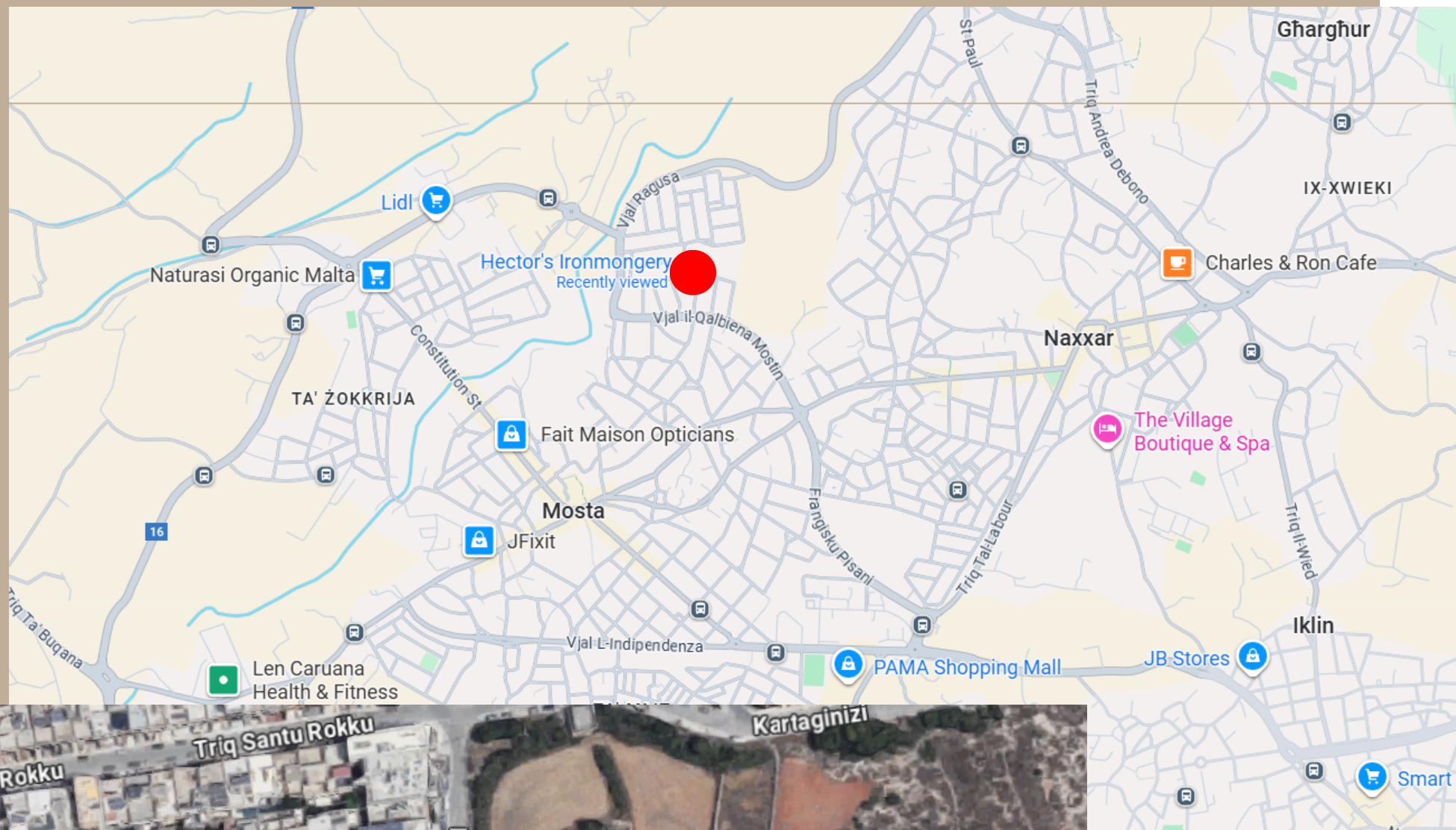
Triq il-Midbaf
Mosta

Disclaimer: This booklet is provided for illustrative purposes only and does not constitute final construction or furnishing documentation. No furniture placement, planning, or related decisions should be made solely on the basis of this booklet. All dimensions and layouts must be verified by accurate on-site measurement. The author accepts no liability for errors, omissions, or reliance placed on this material.



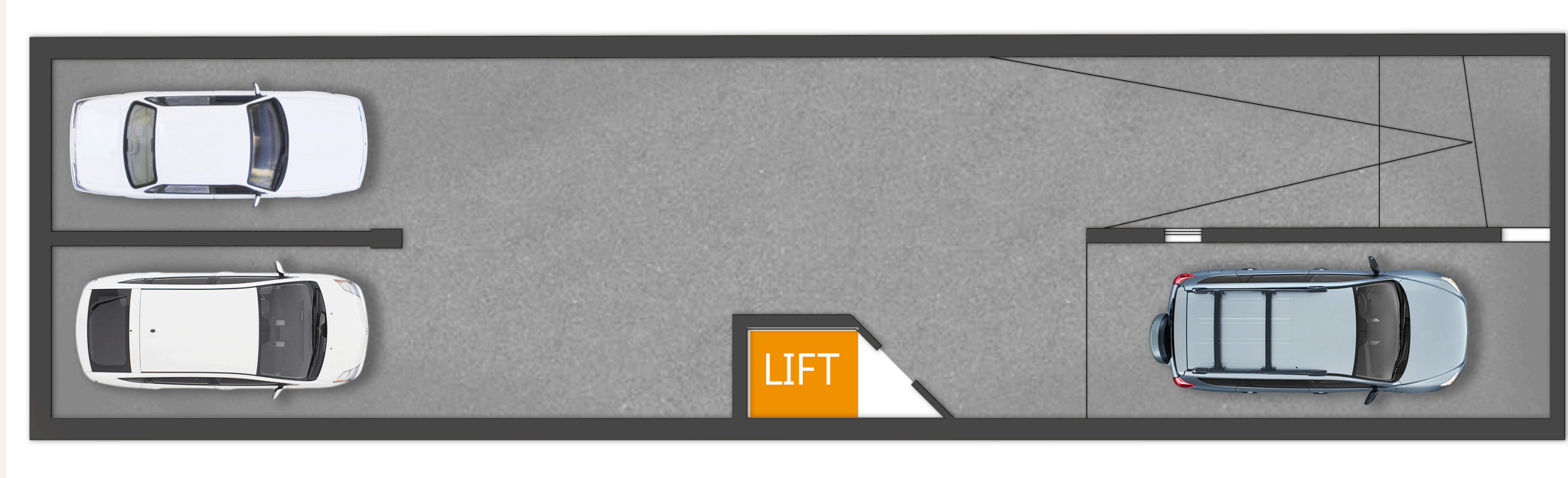
Tal-Balal Road, Tax-Xwieki, Gharghur GHR9013 Malta

(+356) 21424 771/2/3
(+356) 9949 2584

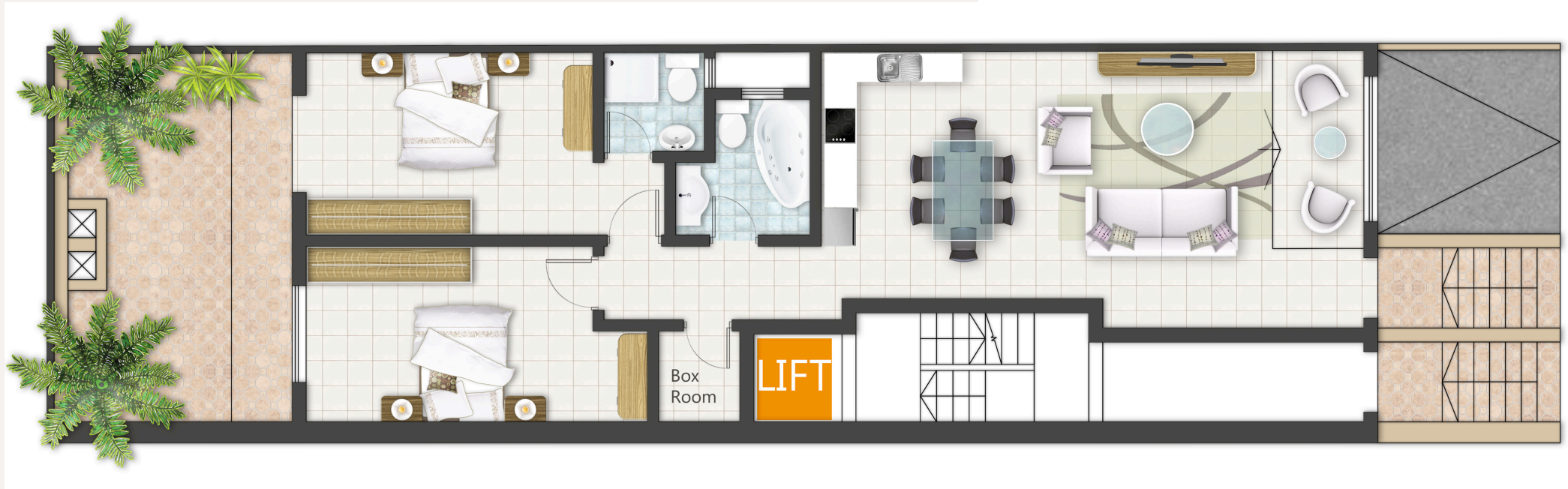


LOCATION

Triq il- Midbaħ
Mosta



Level -1



Maisonette

Area:
Internal Area:94.5 sqmtr
External Area: 23.80 sqmtr



Level 1.2 & 3

Area:

Internal Area: 102.3 sqmtr
External Area 1: 13.27 sqmtr



Level 4

Area:

Internal Area: 65 sqmtr
External Area 1: 36.60 sqmtr



Artistic Views -
External



Artistic Views - External



Artistic Views - Night



Artistic Views - External



Artistic Views -
Interior
Open Plan





Artistic Views -
Interior
Main Bedroom



Tal-Balal Road, Tax-Xwieki, Gharghur GHR9013 Malta

(+356) 21424 771/2/3
(+356) 9949 2584