

# YR Yarra Residence

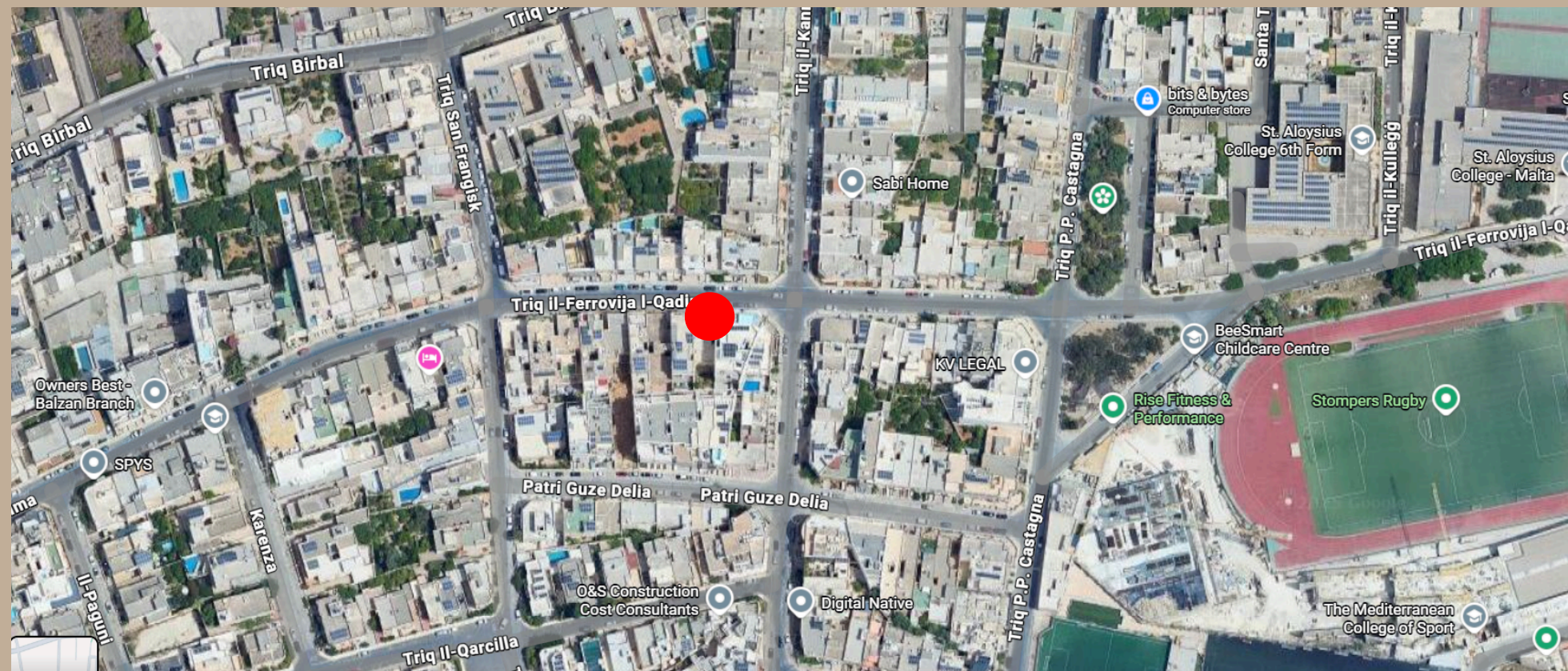
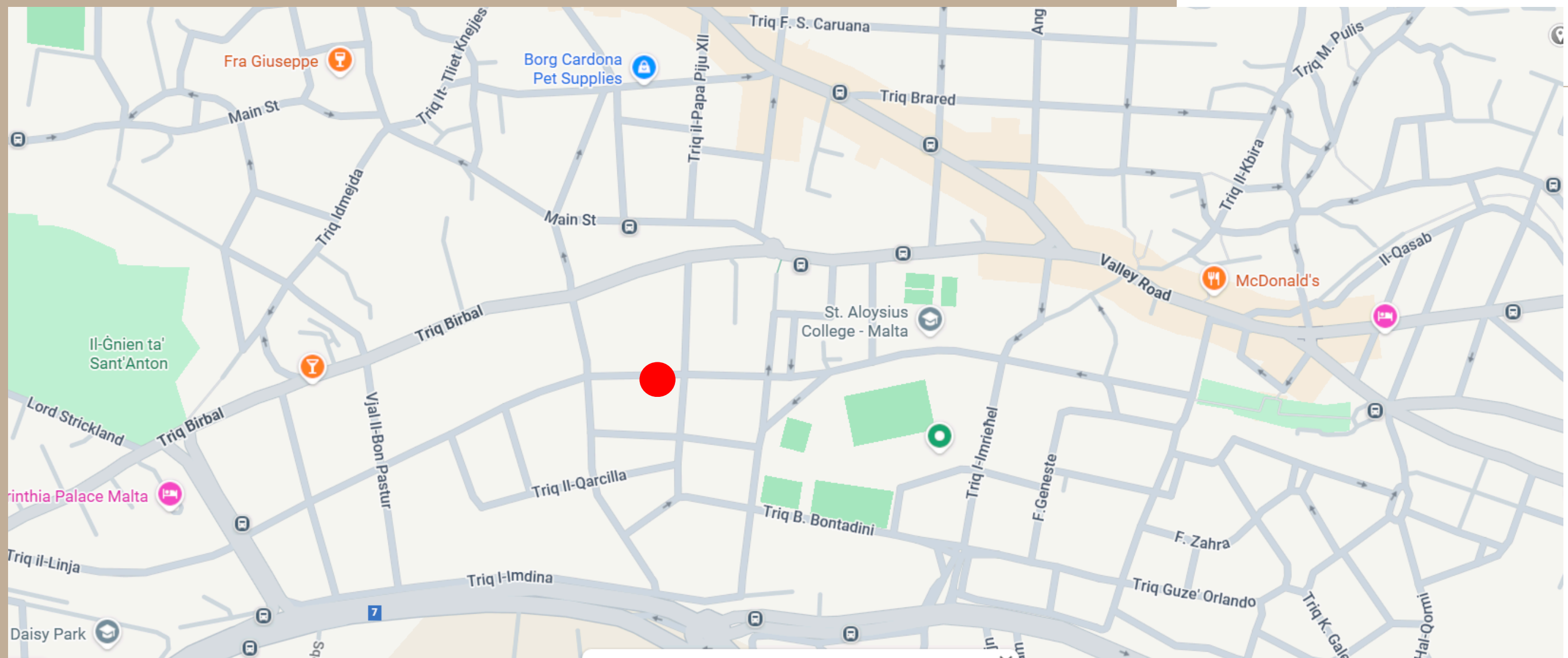
Old Railway Street

Hal' Balzan



Tal-Balal Road, Tax-Xwieki, Gharghur GHR9013 Malta

(+356) 21424 771/2/3  
(+356) 9949 2584

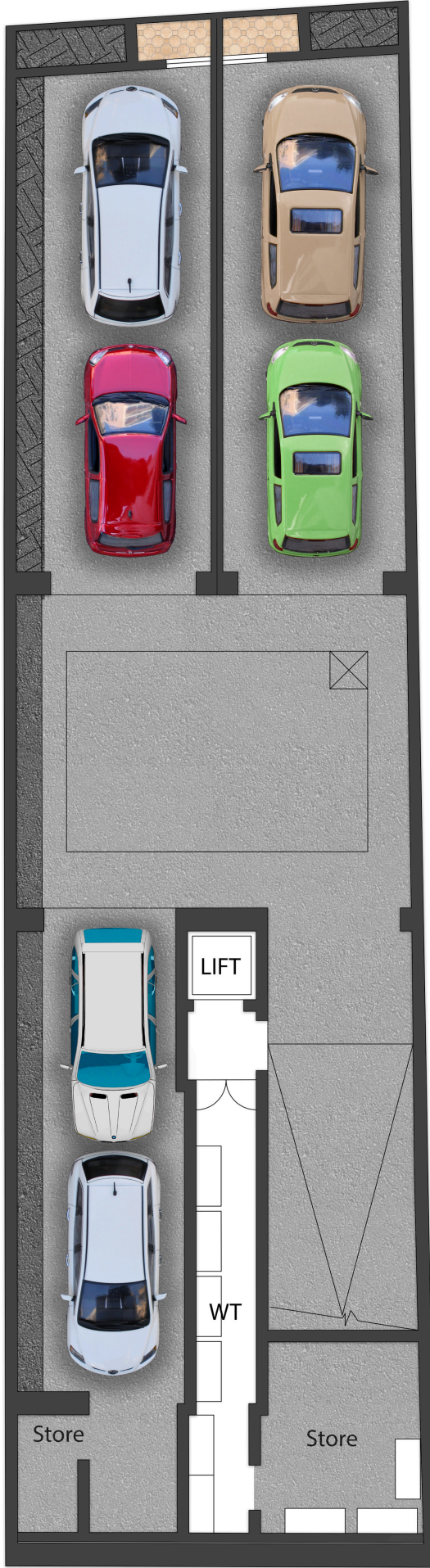


# LOCATION

# Old Railway Street Hal' Balzan



Semi-Basement  
Level



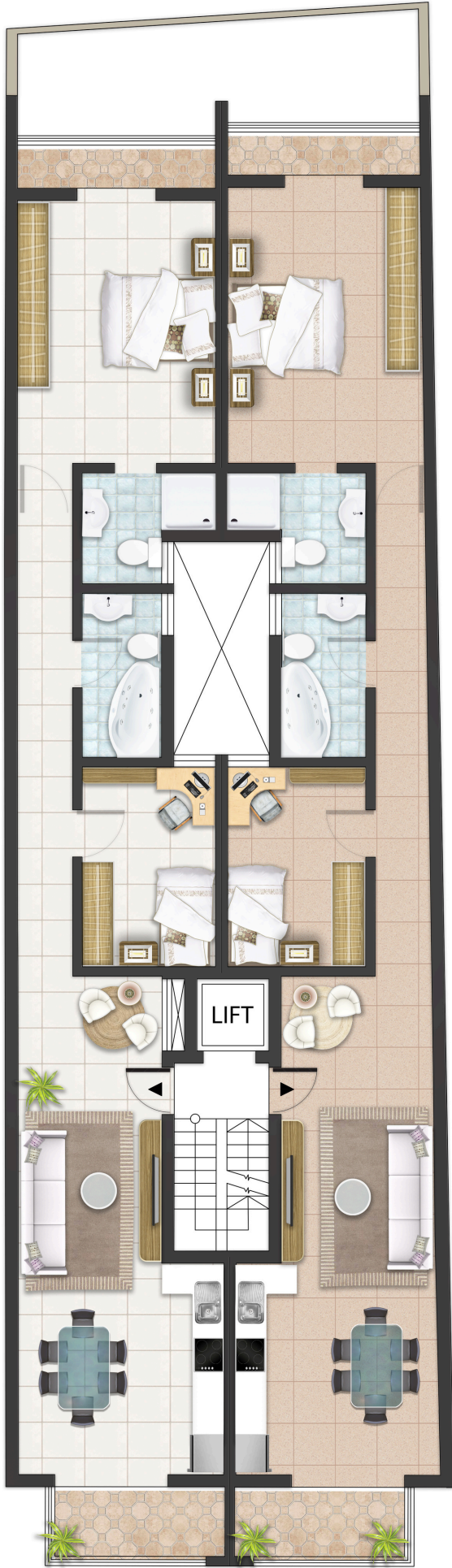
Ground Level



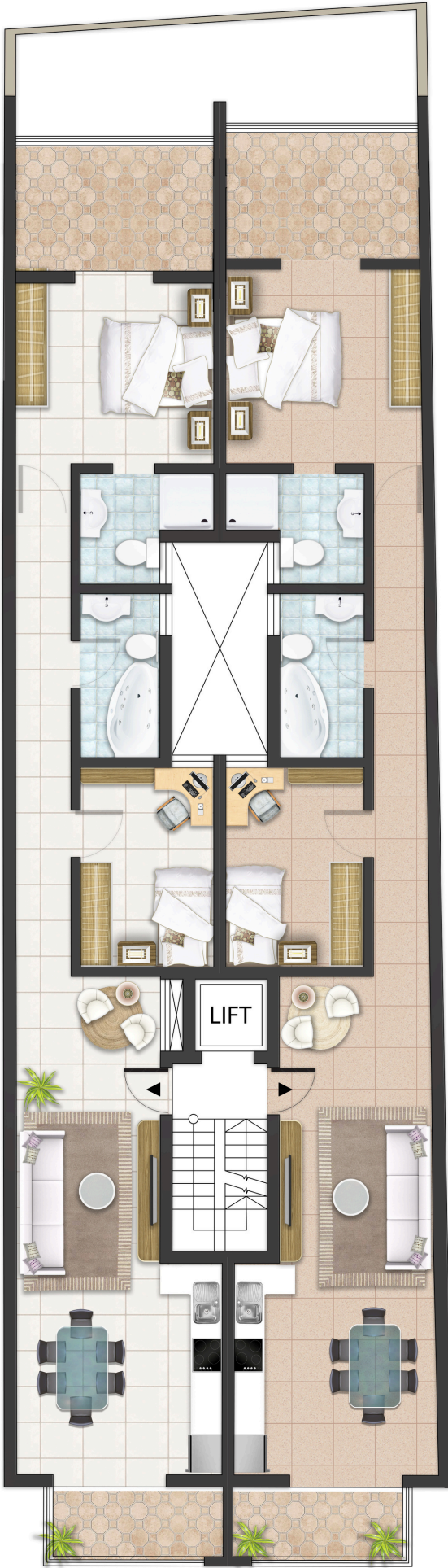
Maisonette 1  
Internal Area: 180sqmtr  
External Area: 35sqmtr

Typical  
Floor  
Plan

Apartment 1&3  
Internal Area: 93 sqmtr  
External Area: 9 sqmtr



Apartment 5  
Internal Area: 87 sqmtr  
External Area: 15 sqmtr



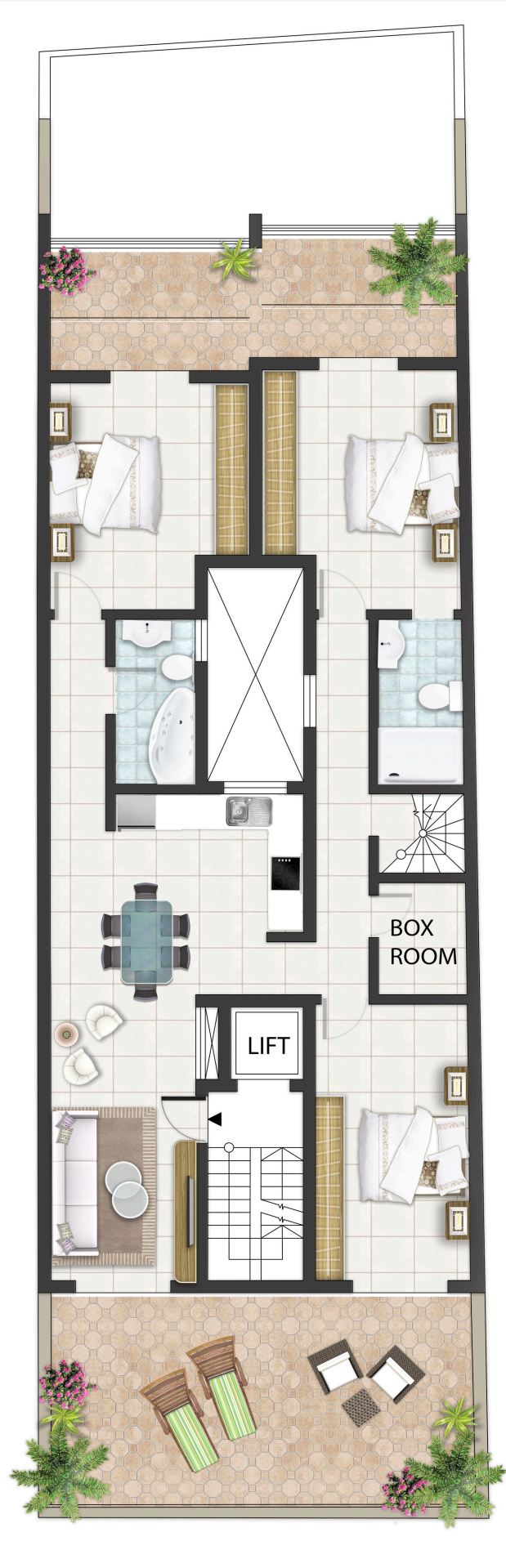
Apartment 6  
Internal Area: 89 sqmtr  
External Area: 15 sqmtr

Apartment 2&4  
Internal Area: 95 sqmtr  
External Area: 9 sqmtr

Receded floor

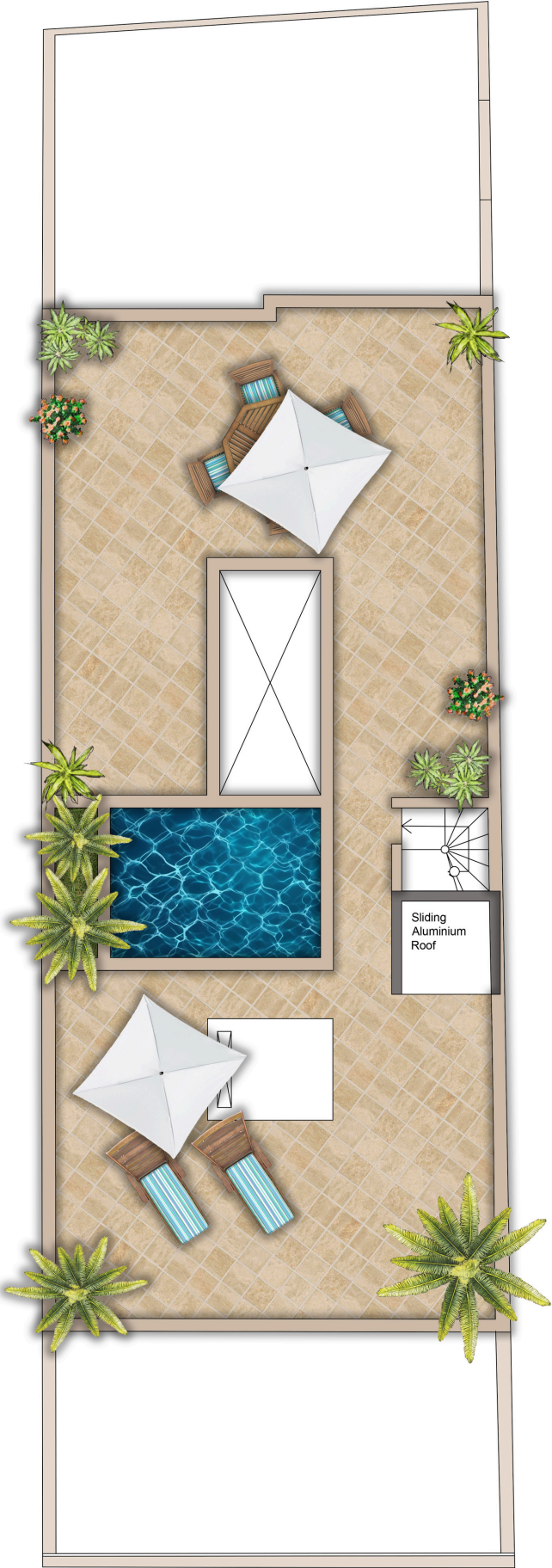
Apartment 6

Internal Area: 135 sqmtr  
External Area: 55 sqmtr



Roof Level

External Area: 142 sqmtr



## Artistic Views - External





*Artistic Views - External*



Artistic View - Street view



Night View



Artistic Views -  
Interior  
Open Plan



Artistic Views -  
Interior  
Open Plan



Artistic Views -  
Interior  
Main Bedroom



Tal-Balal Road, Tax-Xwieki, Gharghur GHR9013 Malta

(+356) 21424 771/2/3  
(+356) 9949 2584